

IMPROVE YOUR HOME & IMPROVE OUR WORLD

**ZANAT**

# Unna Table

## PRODUCT NAME

Unna Table

## DESIGNER

Monica Förster

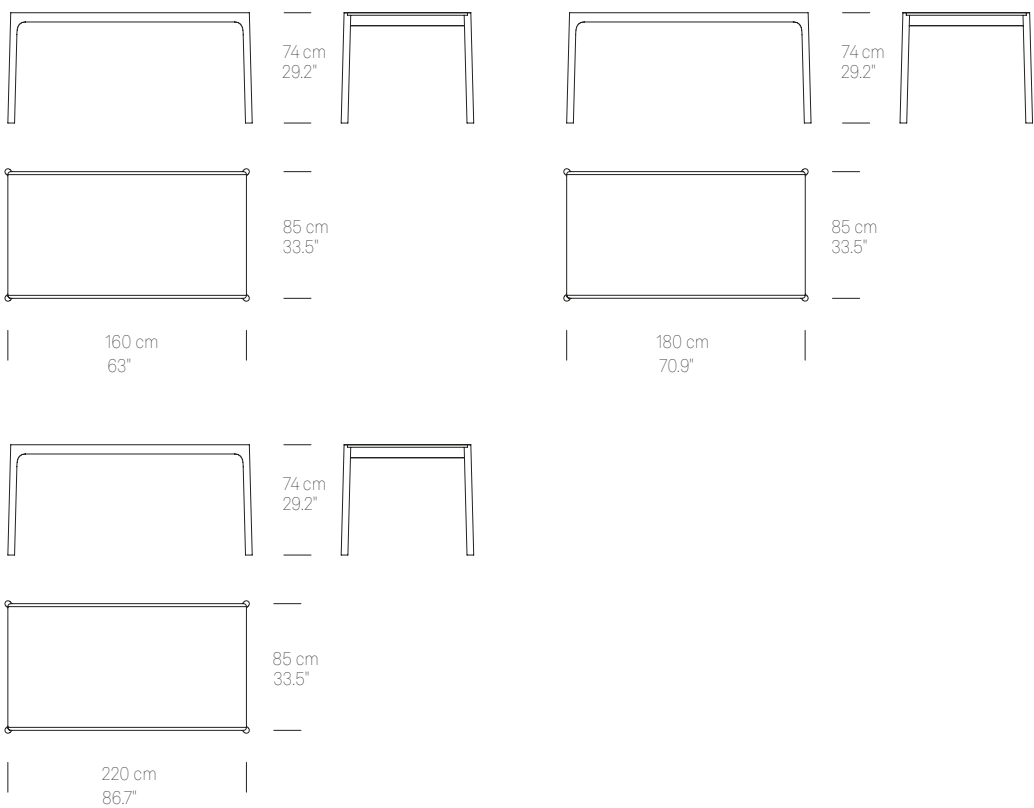
## YEAR OF DESIGN

2016

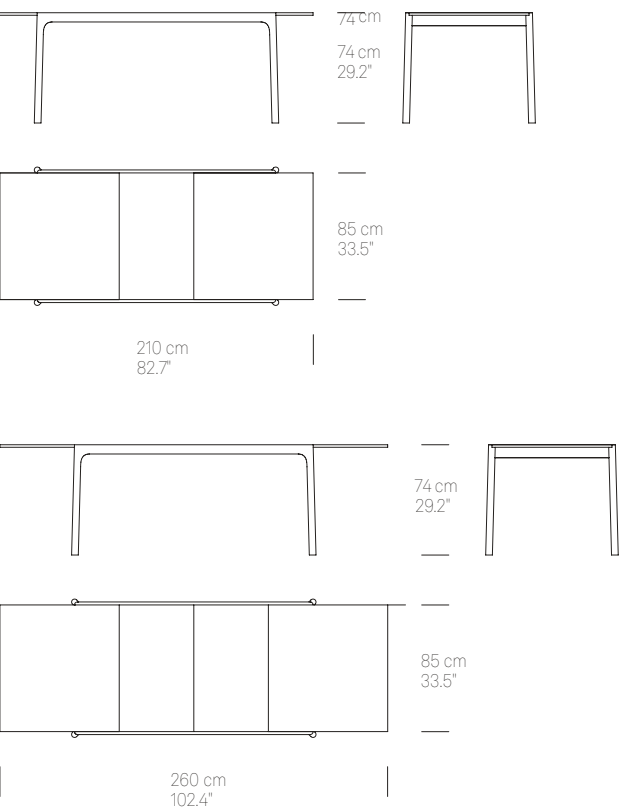


Unna Table's lightness and elegance is arguably unseen in an extension table, in particular a table made entirely in solid wood. It comes in fixed and extendable versions. What distinguishes the extendable version of the table in addition to its overall sleek design are lace-like handcarved tabletop extension leaves, inserted in the middle of the table. The hand-carved leaves catch light beautifully and are irresistibly tactile. The leaves can match the color of the table frame or come in a contrasting color (applies to black and white maple versions). The table can be extended by 50 cm with one and 100 cm with two extension leaves, both conveniently stored underneath the tabletop. The handmade extension mechanism made in steel and wood is custom-designed, very simple to use and built to last.

FIXED TABLE



EXTENDABLE TABLE



PREASSEMBLED

CUSTOMIZATION OPTIONS

Dimensions of the fixed table can be customized. Maximum width is up to 100 cm, maximum length 300 cm. Extendable table can not be customized. It can be ordered with one or two extension leaves, each of which adds 50 cm to table length. Black table is available with black/white or all black carving pattern. Custom finishes may be possible upon request.

ENVIRONMENT

Indoor. Outdoor is possible if protected from sunlight and precipitation.

	DIMENSIONS	NET WEIGHT	PACKAGING TRUCK/AIR/OCEAN freight	PACKED WEIGHT TRUCK/AIR/OCEAN freight	PACKAGE TYPE
FIXED TABLE Dimension 1	W 160 D 85 H 74 cm / W 63.0" D 33.5" H 29.2"	23.0 kg / 50.8 lb*	W 174 D 99 H 90 cm / W 68.6" D 39.0" H 35.5"	70.0 kg / 154.4 lb*	MDF crate
FIXED TABLE Dimension 2	W 180 D 85 H 74 cm / W 70.9" D 33.5" H 29.2"	27.0 kg / 59.6 lb*	W 194 D 99 H 90 cm / W 76.4" D 39.0" H 35.5"	77.0 kg / 169.8 lb*	MDF crate
FIXED TABLE Dimension 3	W 220 D 85 H 74 cm / W 86.7" D 33.5" H 29.2"	30.0 kg / 66.2 lb*	W 234 D 99 H 90 cm / W 92.2" D 39.0" H 35.5"	86.0 kg / 189.6 lb*	MDF crate
EXTENDABLE TABLE 1 leaf	W 210 D 85 H 74 cm / W 82.7" D 33.5" H 29.2"	38.5 kg / 84.9 lb*	W 174 D 99 H 90 cm / W 68.6" D 39.0" H 35.5"	85.5 kg / 188.5 lb*	MDF crate
EXTENDABLE TABLE 2 leaves	W 260 D 85 H 74 cm / W 102.4" D 33.5" H 29.2"	42.5 kg / 93.7 lb*	W 174 D 99 H 90 cm / W 68.6" D 39.0" H 35.5"	90.0 kg / 198.5 lb*	MDF crate

\* Product weights are approximate and vary based on wood species. Different wood densities affect overall weight, even within the same species. If only one weight is shown, it represents the average for maple, ash, and walnut—maple and walnut are similar, while ash is 4% heavier. Oak's weight can be estimated by adding 11% to the net weight. These variations may impact handling, transport, and usage.

\*\* 2D models, 3D models and product images can be found on the product page of ZANAT website.

WOOD AND FINISHES — FIXED TABLE

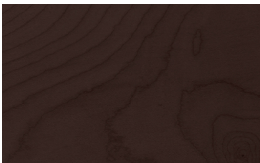
Maple, white oil



Maple, black stain, matte polyurethane lacquer



Maple, wenge stain, matte polyurethane lacquer



Ash, oil



Ash, white oil



Oak, oil



Oak, white oil



Walnut, oil



\*\*\* Please note that colors are only indicative. In particular, color variations are possible in wood that is not stained.

— EXTENDABLE TABLE

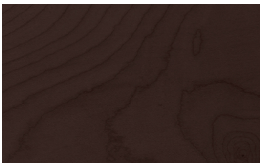
Maple, white oil



Maple, black stain, matte polyurethane lacquer



Maple, wenge stain, matte polyurethane lacquer



Ash, oil



Ash, white oil

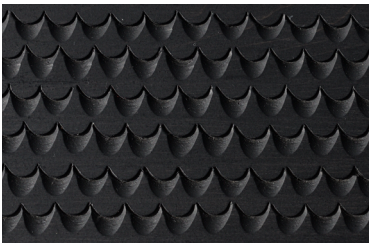


Walnut, oil

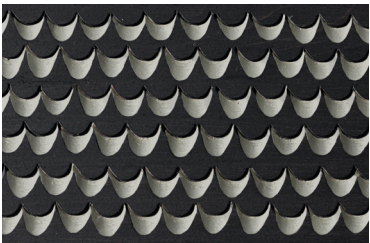


\*\*\*\* Black table is available with black/white or all black carvings.

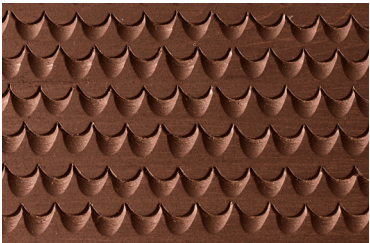
CARVING PATTERN



Maple, black



Maple, black & white



Walnut

COUNTRY OF ORIGIN  
Bosnia and Herzegovina