

IMPROVE YOUR HOME & IMPROVE OUR WORLD

ZANAT

Sova Lounge Chair

PRODUCT NAME

Sova Lounge Chair

DESIGNER

Patrick Norguet

YEAR OF DESIGN

2022



Sova Loungechair is a uniquely bold and comfortable armchair with strong character. The chair's powerful character stems from an elaborate wooden structure, reminiscent of a human figure posed to embrace the seated. The ergonomic design and soft embracing upholstery, with a curved seatback in mold-injected foam, not only add to the product's sophisticated character, but guarantee great seating comfort.

Sova means owl in Bosnian and it was chosen to describe a piece designed for daydreaming and thoughts of wisdom which owls have come to symbolize. The lounge chair's frame will be offered in several woods (maple, walnut, and oak) and finishes with matching choices of designer fabrics and leather upholstery.

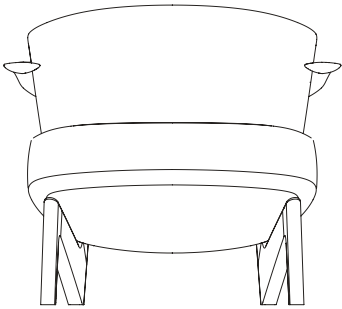
DIMENSIONS

W 76 D 75 H 68, SH 35-40 cm /
W 29.9" D 29.5" H 26.8", SH 13.8"-15.8"

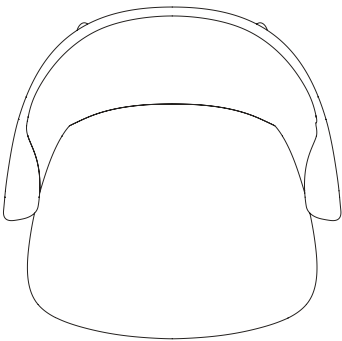
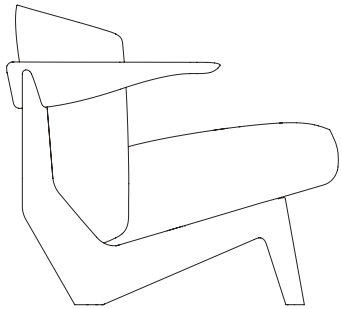
PACKAGING — AIR/OCEAN freight

MDF crate.

W 85 D 84 H 84 cm /
W 33.5" D 33.1" H 33.1"



68 cm
26.8"



75 cm
29.5"

| 76 cm |
29.9"

* Product weights are approximate and vary based on wood species and selected version of Igman Chair. Different wood densities affect overall weight, even within the same species. If only one weight is shown, it represents the average for maple, ash, and walnut—maple and walnut are similar, while ash is 4% heavier. Oak's weight can be estimated by adding 11% to the net weight. These variations may impact handling, transport, and usage.

** 2D models, 3D models and product images can be found on the product page of ZANAT website.

NET WEIGHT

19.5 kg / 43.0 lb*

PACKED WEIGHT — AIR/OCEAN freight

47.0 kg / 103.6 lb*

STACKABLE / MAX STACKING
QUANTITY PER BOX

NO / 1

PREASSEMBLED

CUSTOMIZATION OPTIONS

Custom finishes can be specified. COM and COL customization is offered for orders larger than 4 pieces, but new materials (fabric and leather) may need to be tested prior to order acceptance.

TESTS, CERTIFICATES

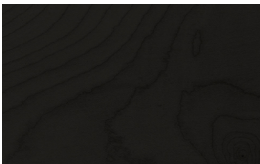
- Tested and certified for use in public spaces in accordance with BAS EN 16 139: 2014 standard.
- Zanat is an FSC certified company.
- UNESCO World Heritage listed woodcarving tradition. The woodcarving technique practiced by the Niksic family for four generations, Zanat owners, was added to UNESCO list of Intangible Cultural Heritage of Humanity.

ENVIRONMENT

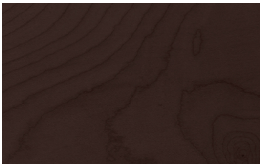
Indoor. Outdoor is possible if protected from sunlight and precipitation.

WOOD AND FINISHES

Maple, black stain, matte polyurethane lacquer



Maple, wenge stain, matte polyurethane lacquer



Walnut, oil

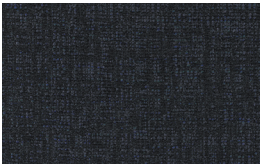


SEAT CUSHION

KVADRAT
Ecriture
0380



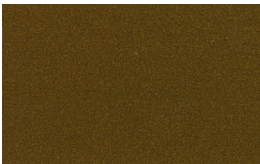
KVADRAT
Sonar 3
0194



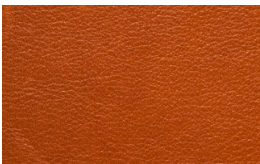
KVADRAT
Baru
0200



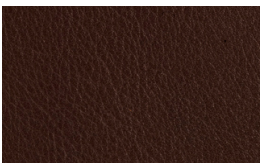
KVADRAT
Baru
0450



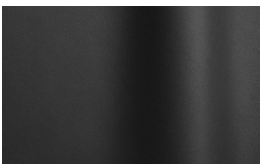
STOLZ Vegetal
leather 95



STOLZ Vegetal
leather 96



FUTURA Nappa
leather 10000



FUTURA Nappa
leather 10032



CARVING PATTERN



Maple, black



Walnut, oil

PIPING DETAIL



AMOUNT OF FABRIC

140 x 190 cm / 55.1" x 74.8"

AMOUNT OF LEATHER

5.5 m² / 59.2 ft²

ADDITIONAL FABRIC FOR PIPING

10 x 280 cm / 3.9" x 110.2"

COUNTRY OF ORIGIN

Bosnia and Herzegovina

*** Please note that colors are only indicative. In particular, color variations are possible in wood that is not stained.