

IMPROVE YOUR HOME & IMPROVE OUR WORLD

**ZANAT**

# Koba Coffee Table (square)

**PRODUCT NAME**

Koba Coffee Table (square)

**DESIGNER**

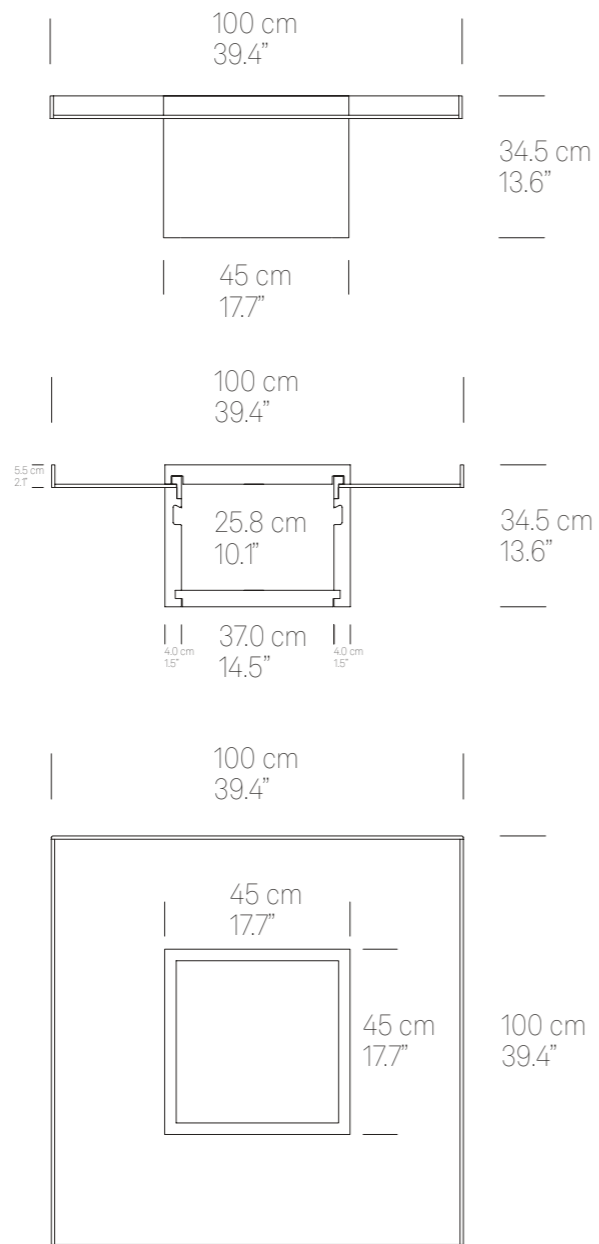
Jean-Marie Massaud

**YEAR OF DESIGN**

2019

Koba coffee table (square) combines sleekness of glass with warmth and tactility of solid wood into a refined sculptural object. Koba features a central cubical table base, made in solid wood. The base penetrates through a smoked glass tabletop, framed around the edges, to create the elevated central part on top. A special highlight are the intricate carvings on top of this central part, which create a texture reminiscent of burnt wood. The base of the table can also be used as a two-level storage compartment. The upper compartment is accessed by simply lifting the hand-carved top, while the lower compartment is a "secret" space, which is easily accessible with instructions provided by Zanat.





## NOT PREASSEMBLED

## CUSTOMIZATION OPTIONS

Dimensions cannot be customized.  
Custom finishes may be possible upon request.

## ENVIRONMENT

Indoor. Outdoor is possible if protected from sunlight and precipitation.

## COUNTRY OF ORIGIN

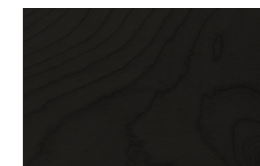
Bosnia and Herzegovina

\* Product weights are approximate and vary based on wood species. Different wood densities affect overall weight, even within the same species. If only one weight is shown, it represents the average for maple, ash, and walnut—maple and walnut are similar, while ash is 4% heavier. Oak's weight can be estimated by adding 11% to the net weight. These variations may impact handling, transport, and usage.

\*\* 2D models, 3D models and product images can be found on the product page of ZANAT website.

## WOOD AND FINISHES

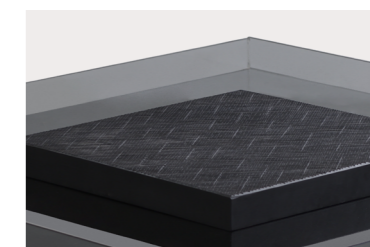
Maple, black stain, matte polyurethane lacquer



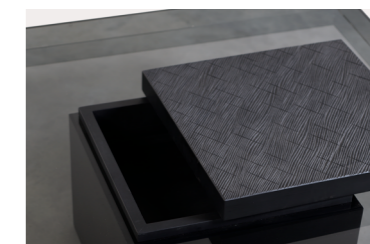
Walnut, oil



## CARVING PATTERN



## STORAGE CONTAINER



	DIMENSIONS	NET WEIGHT		PACKAGING TRUCK/AIR/OCEAN freight	PACKED WEIGHT TRUCK/AIR/OCEAN freight	PACKAGE TYPE
COFFEE TABLE (SQUARE)	W 100 D 100 H 34.5 cm / W 39.4" D 39.4" H 13.6"	46.0 kg / 101.4 lb*	TOP	W 108 D 108 H 16 cm / W 42.5" D 42.5" H 6.3"	54.5 kg / 120.2 lb*	MDF crate
			BASE	W 53 D 53 H 43 cm / W 20.9" D 20.9" H 16.9"	35.0 kg / 77.2 lb*	MDF crate

\*\*\* Two-level storage container is hidden underneath the carved wooden top.

\*\*\*\* Please note that colors are only indicative. In particular, color variations are possible in wood that is not stained.