

IMPROVE YOUR HOME & IMPROVE OUR WORLD

ZANAT

Café Tattoo Chair

PRODUCT NAME

Café Tattoo Chair

DESIGNER

Wingårdhs

YEAR OF DESIGN

2018



Café Tattoo chair is a charming, minimalist, and youthful chair with clean architectural lines. The chair is the latest addition to the popular family of Tattoo stools and bar stools. Café Tattoo is a lightweight and stackable chair featuring a backrest in 2mm thick natural saddle leather. Each leg joins the seat by fully penetrating it, leaving a charming woodgrain mark on the seat top. The chair is designed for use in public spaces such as restaurants, bars, meeting rooms, but it is equally suitable for residential use. Standard versions of the chair are available in oiled ash and oak with brown leather backrest and a black-stained version with black leather backrest.

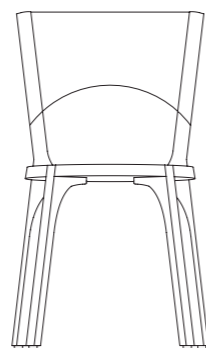
Both plain and hand-carved versions of the chair are available, as well as options with upholstered seats in leather. Upholstered seat cushion in leather is optional.

DIMENSIONS

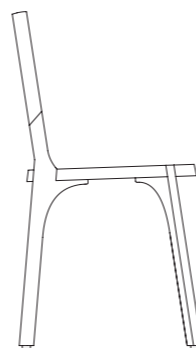
W 40 D 40 H 81, SH 44 cm /
W 15.5" D 15.5" H 32", SH 17" in

PACKAGING

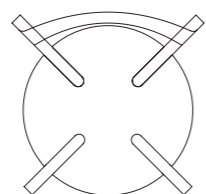
Standard package - cardboard box.
W 69 D 63 H 90 cm /
W 27" D 24,8" H 35,5" in
MDF crate is possible. Additional
charges may apply.
Max 2 chairs per box.



81 cm
32"



44 cm
17"



40 cm
15.5"

| 40 cm |
| 15.5" |

NET WEIGHT

5 kg / 11 lb

PACKAGED WEIGHT

10 kg / 22 lb

STACKABLE / MAX QUANTITY

YES / 3

PREASSEMBLED

YES

CUSTOMIZATION OPTIONS

Custom finishes can be specified.

TESTS, CERTIFICATES

- Tested and certified for use in public spaces in accordance with BAS EN 16 139: 2014 standard.
- Zanat is an FSC certified company.
- UNESCO World Heritage listed woodcarving tradition.
The woodcarving technique practiced by the Niksic family for four generations, Zanat owners, was added to UNESCO list of Intangible Cultural Heritage of Humanity.

ENVIRONMENT

Indoor. Outdoor is possible if protected from sunlight and precipitation.

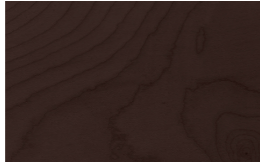
* 2D models, 3D models and product images can be found on the product page of ZANAT website.

WOOD AND FINISHES

Maple, black stain, matte polyurethane lacquer



Maple, wenge stain, matte polyurethane lacquer



Ash, oil



Ash, white oil



Oak, oil



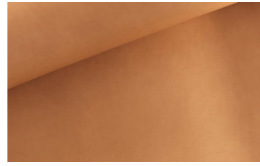
Oak, white oil



* Please note that colors are only indicative. In particular, color variations are possible in wood that is not stained.

SEAT CUSHION AND BACKREST

Saddle leather (cognac)



Saddle leather (black)



* The seats are fixed and upholstered.

CARVING PATTERNS



Perla



Pippi

COUNTRY OF ORIGIN

Bosnia and Herzegovina